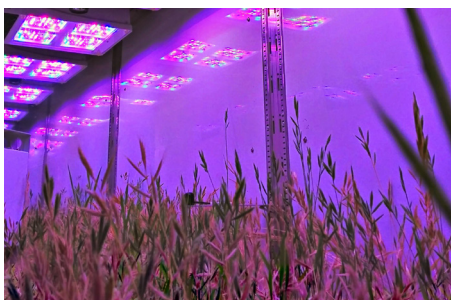


## Designing the APPF of the future - NCRIS investments 2023 and beyond

The journey towards the next round of major investment into Australia's publicly funded research infrastructure is underway, through the National Collaborative Research Infrastructure Strategy (NCRIS). As the national research infrastructure facility serving the agricultural sector, the Australian Plant Phenomics Facility (APPF) is championing an expanded offering of open access, world-class research infrastructure from 2023 onwards. This will extend beyond plant phenomics, enabling advances in agriculture, plant science and food science to support sustainable agriculture, food production and human health.



You are invited to share your views and ideas to help shape that future

### THE APPF TODAY

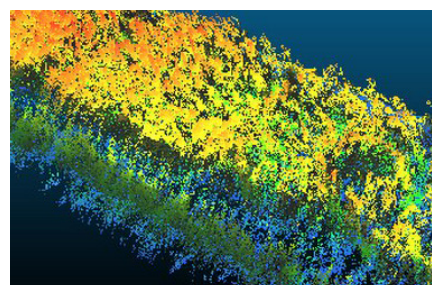
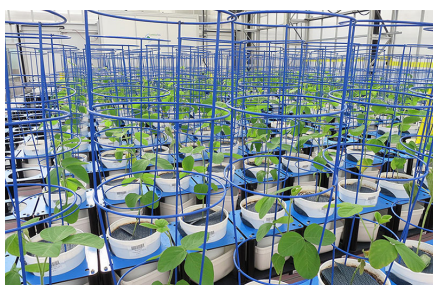
- We provide access to globally-leading research infrastructure and supporting services in sensing, imaging and analytics across field and controlled-environment platforms, that enable impact in plant science and digital and precision agriculture
- We are a trusted and essential partner driving innovation across the Australian research sector and the economy, to address grand challenges facing agricultural sustainability and healthy food supply
- Our technologies, data management solutions and multidisciplinary expertise support researchers and innovators from across Australia and around the world.

### THE APPF TOMORROW

- Builds on our strong core foundations, optimising these, and adding to them in transformative ways to enable research excellence and innovation, and to underpin a resilient and competitive Australia
- Harnesses and drives exciting advances in technology that are expected to have revolutionary impact for sustainable agriculture, food production and human health. These may include integrated genomic to phenomic technologies, remote sensing, and novel farming systems technologies
- Partners closely with other NCRIS facilities to ensure optimum value from our combined capabilities, from cellular to landscape scales, harnessing and making more accessible the transformative power of data.

## PROCESS AND TIMELINES

2021	2022	2023
Commonwealth Government develops and releases next National Research Infrastructure Roadmap (portfolios of Education, and Industry, Science and Technology combine to drive this).	Responding to the Roadmap, the Federal Government develops and releases the next major Research Infrastructure Investment Plan (2023-2029) (RIIP). RIIP released no later than Dec 2022.	NCRIS facilities transition from existing to new (2023 and beyond) models, structures and missions.
APPF undertakes surveys, online consultations and workshops - with industry, government and research organisations.  APPF provides input and formal submissions into the Roadmap drafting process.	Targeted and intensive engagement across core and prospective APPF host organisations and co-investors, tested against the identified needs and priorities of the research community, industry and government.	Forward-facing business plans for 'future APPF' developed and submitted to the Commonwealth.
Core themes for the APPF of the future emerge and are tested. Future APPF 'prospectus' developed and refined with stakeholders and potential implementation partners.	Final co-development of research infrastructure 'blueprint' for future APPF, supported by impact and ROI analyses, and informing final business case for investment, to be submitted early 2022.	New investments begin to flow, building on and leveraging core existing APPF strengths and achievements.



## APPF'S RE-BID PREPARATIONS TO DATE

We have:

- Developed a strong [APPF Strategic Plan](#) to lead us from now through to 2023
- Launched our [APPF Engagement Hub](#) to enable us to connect and engage with APPF stakeholders throughout the 're-bid' process, and hosted an initial online consultation campaign
- Engaged Clarivate Analytics (UK) Ltd for future-scoping of important research fronts, using their Web of Science Core Collection
- Begun investment in a range of new initiatives to grow and expand our capability in key areas e.g. [Australia's Scalable Drone Cloud](#) and [OzBarley](#)

### PLEASE JOIN WITH US ON THIS JOURNEY

Connect with us through our Engagement Hub  
[appf.engagementhub.com.au](http://appf.engagementhub.com.au) contact us [appf@plantphenomics.org.au](mailto:appf@plantphenomics.org.au) or call **61 8 8313 0159** with your ideas and to discuss opportunities.